

(+)-Epipinoresinol Datasheet

5th Edition (Revised in January, 2017)

[Product Information]

Name: (+)-Epipinoresinol

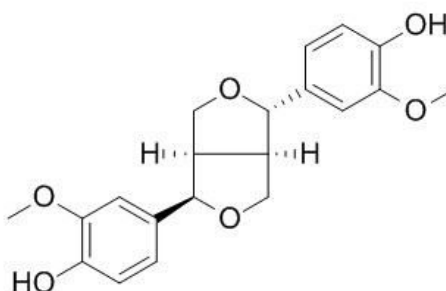
Catalog No.: CFN92288

Cas No.: 24404-50-0

Purity: > 95%

M.F: C₂₀H₂₂O₆

M.W: 358.4



Physical Description: Powder

Synonyms: Phenol,4,4'-[(1R,3aR,4S,6aR)-tetrahydro-1H,3H-furo[3,4-c]furan-1,4-diyl]bis[2-methoxy-; epi-Pinoresinol.

[Intended Use]

1. Reference standards;
2. Pharmacological research;
3. Synthetic precursor compounds;
4. Intermediates & Fine Chemicals;
5. Others.

[Source]

The heartwood of *Picea excelsa*.

[Biological Activity or Inhibitors]

Not data available.

[**Solvent**]

Chloroform, Dichloromethane, Ethyl Acetate, DMSO, Acetone, etc.

[**HPLC Method**]^[1]

Mobile phase: 0.3% Acetic acid in water- Methanol, gradient elution ;

Flow rate: 1.0 ml/min;

Column temperature: Room Temperature;

The wave length of determination: 280 nm.

[**Storage**]

2-8°C, Protected from air and light, refrigerate or freeze.

[**References**]

[1] Guo H, Liu A L, Guo D. *J. Pharm. Biomed. Anal.*, 2007, 43(3):1000-6.

[**Contact**]

Address:

S5-3 Building, No. 111, Dongfeng Rd.,
Wuhan Economic and Technological Development Zone,
Wuhan, Hubei 430056,
China

Email: info@chemfaces.com

Tel: +86-27-84237783

Fax: +86-27-84254680

Web: www.chemfaces.com

Tech Support: service@chemfaces.com