

20R-Ginsenoside Rg2 Datasheet

4th Edition (Revised in July, 2016)

[Product Information]

Name: 20R-Ginsenoside Rg2

Catalog No.: CFN90412

Cas No.: 80952-72-3

Purity: >=98%

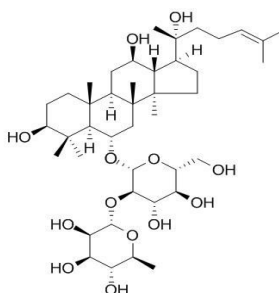
M.F: C₄₂H₇₂O₁₃

M.W: 785.02

Physical Description: Powder

Synonyms:3(3beta,6alpha,12beta,20R)-3,12,20-Trihydroxydammar-24-en-6-yl

2-O-(6-deoxy-alpha-L-mannopyranosyl)-beta-D-glucopyranoside;GF VII.



[Intended Use]

1. Reference standards;
2. Pharmacological research;
3. Food research;
4. Cosmetic research;
5. Synthetic precursor compounds;
6. Intermediates & Fine Chemicals;
7. Others.

[Source]

The roots of *Panax ginseng* C. A. Mey.

[Biological Activity or Inhibitors]

Ginsenoside Rg2 is one of the major active components of ginseng, it can protect H9c2 cells against H₂O₂- induced injury through its actions of anti-oxidant and anti-apoptosis.^[1]

Ginsenoside Rg2 suppresses the hepatic glucose production via AMPK-induced phosphorylation of GSK3 β and induction of SHP gene expression, it may have a therapeutic potential for type 2 diabetic patients.^[2]

20R-Ginsenoside Rg2 inhibits the cytokine interleukin 1 alpha (IL-1 α)-induced reduction in gap junction-mediated intercellular communication (GJIC).^[3]

[Solvent]

Pyridine, Methanol, Ethanol, etc.

[HPLC Method]^[4]

Mobile phase: Methanol - H₂O = 65:35;

Flow rate: 1.0 ml/min;

Column temperature: 25°C;

The wave length of determination: 203 nm.

[Storage]

2-8°C, Protected from air and light, refrigerate or freeze.

[References]

[1] Fu W, Sui D, Yu X, *et al. Int. J. Clin. Exp.Med.*, 2015, 8(11):19938-47.

[2] Yuan H D, Kim D Y, Quan H Y, *et al. Chem.Biol. Interact.*, 2012, 195(1):35-42.

[3] Zhang Y W, Dou D Q, Zhang L, *et al. Planta Med.*, 2001, 67(5):417-22.

[4] Yu M, Mi H, Jiao L. *China Pharmacist*, 2005, 8(12):1017-9.

[Contact]

Address:

S5-3 Building, No. 111, Dongfeng Rd.,
Wuhan Economic and Technological Development Zone,
Wuhan, Hubei 430056,
China

Email: info@chemfaces.com

Tel: +86-27-84237783

Fax: +86-27-84254680

Web: www.chemfaces.com

Tech Support: service@chemfaces.com