

## 3-Epidehydrotumulosic acid Datasheet

4<sup>th</sup> Edition (Revised in July, 2016)

### [ Product Information ]

**Name:** 3-Epidehydrotumulosic acid

**Catalog No.:** CFN92743

**Cas No.:** 167775-54-4

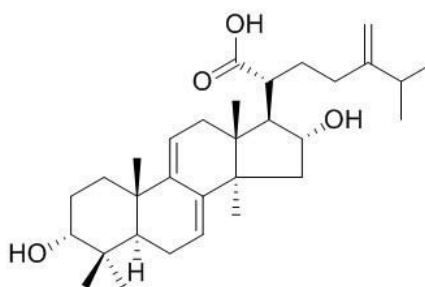
**Purity:** >95%

**M.F:** C<sub>31</sub>H<sub>48</sub>O<sub>4</sub>

**M.W:** 484.7

**Physical Description:** Powder

**Synonyms:** (3 $\alpha$ , 16 $\alpha$ )-3, 16-Dihydroxy-24-methylenelanosta-7, 9(11)-dien-21-oic acid.



### [ Intended Use ]

1. Reference standards;
2. Pharmacological research;
3. Synthetic precursor compounds;
4. Intermediates & Fine Chemicals;
5. Others.

### [ Source ]

The root of *Wolfiporia cocos* (Schw.) Ryv.

### [ Biological Activity or Inhibitors ]

3-Epidehydrotumulosic acid has inhibitory activities against free radical-induced lysis of red blood cells.<sup>[1]</sup>

3-Epidehydrotumulosic acid shows potent inhibitory effects on Epstein61Barr virus early antigen (EBV-EA) activation induced by the tumor promoter 12-O-tetradecanoylphorbol-13-acetate (TPA).<sup>[2]</sup>

## **[ Solvent ]**

Chloroform, Dichloromethane, Ethyl Acetate, DMSO, Acetone, etc.

## **[ HPLC Method ]<sup>[3]</sup>**

Mobile phase: Acetonitrile- 0.1% Formic acid H<sub>2</sub>O, gradient elution ;

Flow rate: 1.0 ml/min;

Column temperature: 25 °C;

The wave length of determination: 243 nm.

## **[ Storage ]**

2-8°C, Protected from air and light, refrigerate or freeze.

## **[ References ]**

[1] Sekiya N, Goto H, Shimada Y, *et al. Phytother. Res. Ptr*, 2003, 17(2):160-2.

[2] Motohiko Ukiya, Toshihiro Akihisa , Harukuni Tokuda, *et al. J. Nat. Prod.*, 2002, 65(4): 462-5.

[3] Xia Y, Yang C H, Liu J H, *et al. P. Pharmaceut. Sci.*, 2009, 33(6):271.

## **[ Contact ]**

### **Address:**

S5-3 Building, No. 111, Dongfeng Rd.,  
Wuhan Economic and Technological Development Zone,  
Wuhan, Hubei 430056,

**Email:** [info@chemfaces.com](mailto:info@chemfaces.com)

**Tel:** +86-27-84237783

**Fax:** +86-27-84254680

**Web:** [www.chemfaces.com](http://www.chemfaces.com)

China

**Tech Support:** [service@chemfaces.com](mailto:service@chemfaces.com)