

Cyclo(Leu-Leu) Datasheet

5th Edition (Revised in January, 2017)

[Product Information]

Name: Cyclo(Leu-Leu)

Catalog No.: CFN90288

Cas No.: 1436-27-7

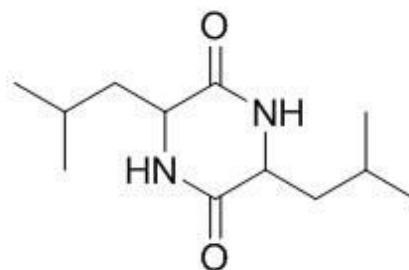
Purity: 98%

M.F: C₁₂H₂₂N₂O₂

M.W: 226.32

Physical Description: Powder

Synonyms: 3,6-bis(2-Methylpropyl)piperazine-2,5-dione; 3,6-Diisobutylhexahydropyrazine-2,5-dione.



[Intended Use]

1. Reference standards;
2. Pharmacological research;
3. Synthetic precursor compounds;
4. Intermediates & Fine Chemicals;
5. Others.

[Source]

From *Pantoea agglomerans*.

[Biological Activity or Inhibitors]

Cyclo(Leu-Leu) is an efficient supramolecular catalyst.^[1]

[**Solvent**]

Chloroform, Dichloromethane, Ethyl Acetate, DMSO, Acetone, etc.

[**HPLC Method**]

Not data available.

[**Storage**]

2-8°C, Protected from air and light, refrigerate or freeze.

[**References**]

[1] Bérubé C, Barbeau X, Cardinal S, *et al. Supramolecular Chemistry*, 2017,29(5):330-49.

[**Contact**]

Address:

S5-3 Building, No. 111, Dongfeng Rd.,
Wuhan Economic and Technological Development Zone,
Wuhan, Hubei 430056,
China

Email: info@chemfaces.com

Tel: +86-27-84237783

Fax: +86-27-84254680

Web: www.chemfaces.com

Tech Support: service@chemfaces.com