

## Eupatoriochromene Datasheet

5<sup>th</sup> Edition (Revised in January, 2017)

### [ Product Information ]

**Name:** Eupatoriochromene

**Catalog No.:** CFN99879

**Cas No.:** 19013-03-7

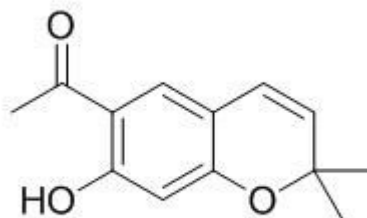
**Purity:** >=95%

**M.F:** C<sub>13</sub>H<sub>14</sub>O<sub>3</sub>

**M.W:** 218.3

**Physical Description:** Cryst.

**Synonyms:** 1-(7-Hydroxy-2,2-dimethylchromen-6-yl)ethanone; 6-Acetyl-7-hydroxy-2,2-dimethylchromene; Desmethylenecalin.



### [ Intended Use ]

1. Reference standards;
2. Pharmacological research;
3. Synthetic precursor compounds;
4. Intermediates & Fine Chemicals;
5. Agricultural research;
6. Others.

### [ Source ]

The herbs of *Centaurea solstitialis* L.

## **[ Biological Activity or Inhibitors ]**

Eupatoriochromene is a plant growth regulator, it can retard seed germination, reduce radicle and hypocotyl growth of weed and crop plant seedlings and increase adventitious root formation of mung bean cuttings.<sup>[1]</sup>

Eupatoriochromene has insecticidal activity, it exhibits toxicity against *Culex pipiens* (house mosquito) larvae and *Oncopeltus fasciatus* (large milkweed bug) nymphs.<sup>[2]</sup>

## **[ Solvent ]**

Chloroform, Dichloromethane, Ethyl Acetate, DMSO, Acetone, etc.

## **[ HPLC Method ]**

Not data available.

## **[ Storage ]**

2-8°C, Protected from air and light, refrigerate or freeze.

## **[ References ]**

[1] Merrill G B. *J. Chem. Ecol.*, 1989, 15(7):2073-87.

[2] Klocke J A, Balandrin M F, Adams R P, *et al. J.Chem. Ecol.*, 1985, 11(6):701-12.

## **[ Contact ]**

### **Address:**

S5-3 Building, No. 111, Dongfeng Rd.,  
Wuhan Economic and Technological Development Zone,  
Wuhan, Hubei 430056,  
China

**Email:** [info@chemfaces.com](mailto:info@chemfaces.com)

**Tel:** +86-27-84237783

**Fax:** +86-27-84254680

**Web:** [www.chemfaces.com](http://www.chemfaces.com)

**Tech Support:** [service@chemfaces.com](mailto:service@chemfaces.com)