

Strictosamide Datasheet

5th Edition (Revised in January, 2017)

[Product Information]

Name: Strictosamide

Catalog No.: CFN98237

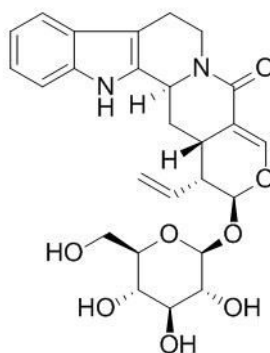
Cas No.: 23141-25-5

Purity: > 95%

M.F: C₂₆H₃₀N₂O₈

M.W: 498.5

Physical Description: Powder



Synonyms: (15beta,16alpha,17beta)-16-ethenyl-21-oxo-19,20-didehydro-18-oxayohimban-17-yl beta-D-glucopyranoside.

[Intended Use]

1. Reference standards;
2. Pharmacological research;
3. Synthetic precursor compounds;
4. Intermediates & Fine Chemicals;
5. Others.

[Source]

The herbs of *Nauclea latifolia*.

[Biological Activity or Inhibitors]

Strictosamide is the main glycoalkaloid of *Sarcocephalus latifolius* (Rubiaceae) leaves and roots, it is slightly toxic to Charles River mouse ($LD_{50}=723.17$ mg/kg), producing CNS depression and kidney toxicity, it can inhibit the in vitro and in vivo $Mg(2+)$ -ATPase activity on kidney but have nonsignificant effect on brain, suggests that strictosamine may be related to the induction of $\alpha(2)$ isoform of $Na(+),K(+)$ -ATPase and may account for the folk use of *Sarcocephalus latifolius* root infusion on hypertension.^[1]

Strictosamide possesses antibacterial and antiviral activities.^[2]

Strictosamide may have important effects on inflammation and inflammatory pain, the results provide scientific support for the role of strictosamide in the use of *N. officinalis* to treat inflammatory diseases.^[3]

High-dose intravenous injection of strictosamide may lead to a lower blood pressure, a slower heart rate and a prolongation on the QT interval in beagle dogs, which returned to basal levels when medication stopped.^[4]

[Solvent]

Pyridine, Methanol, Ethanol, etc.

[HPLC Method]^[5]

Mobile phase: 0.05% Acetic acid in water- Acetonitrile, gradient elution;

Flow rate: 1.0 ml/min;

Column temperature: 30°C;

The wave length of determination: 226 nm.

[Storage]

2-8°C, Protected from air and light, refrigerate or freeze.

[References]

[1] Candeias M F, Abreu P, Pereira A, *et al.* *J. Ethnopharmacol.*, 2009 Jan 12; 121(1):117

-22.

[2] Li N, Cao L, Ding G, et al. *Chinese Journal of Experimental Traditional Medical Formulae*, 2012, 18(15):170-4.

[3] Li N, Cao L, Cheng Y, et al. *Pharm. Biol.*, 2014 Nov; 52(11):1445-50.

[4] Su Z Z, Li N, Cao L, et al. *Modernization of Traditional Chinese Medicine and Materia Medica-World Science and Technology*, 2014(7):1558-64.

[5] Wang J J, Jiang J, Zhu F X, et al. *Chinese Traditional Patent Medicine*, 2012, 34(12): 2326-30.

[Contact]

Address:

S5-3 Building, No. 111, Dongfeng Rd.,
Wuhan Economic and Technological Development Zone,
Wuhan, Hubei 430056,
China

Email: info@chemfaces.com

Tel: +86-27-84237783

Fax: +86-27-84254680

Web: www.chemfaces.com

Tech Support: service@chemfaces.com